



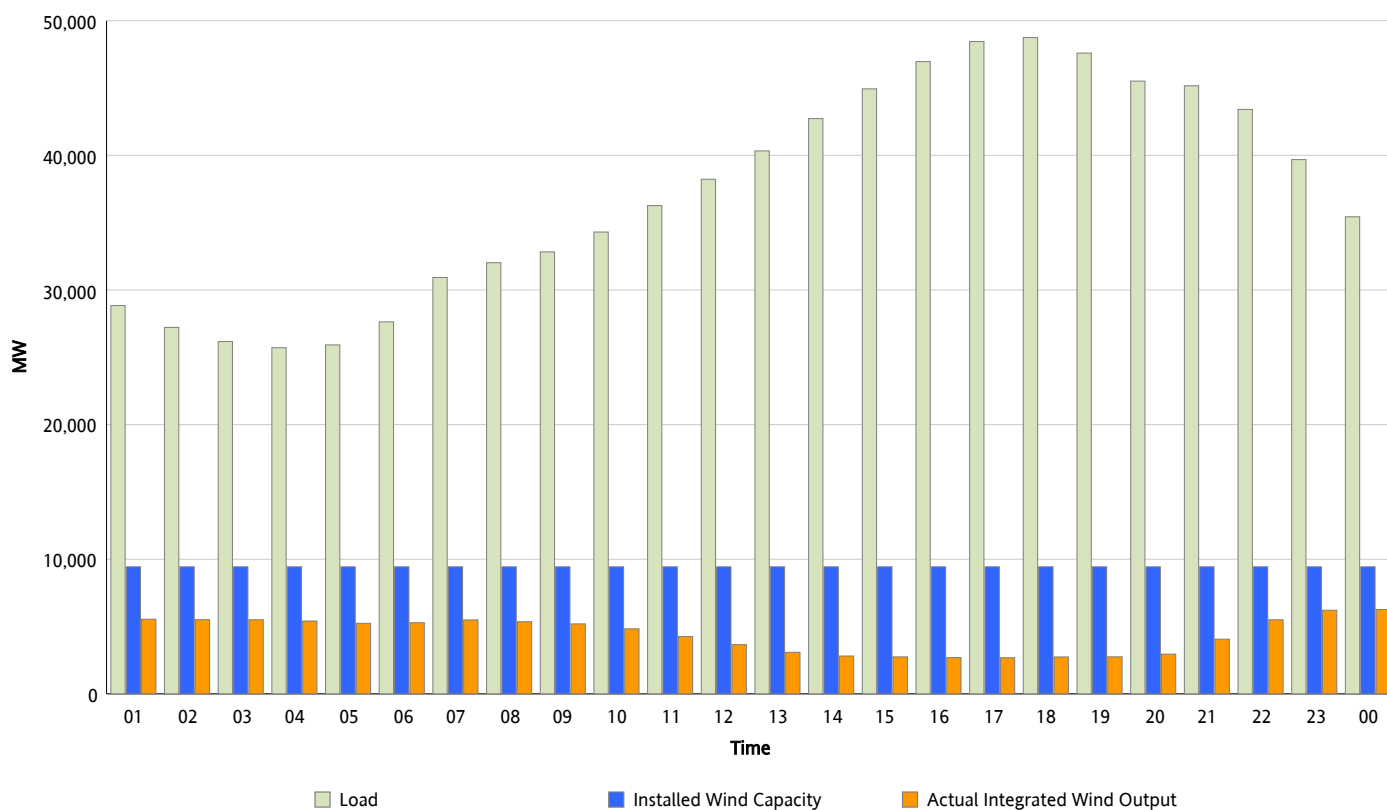
## ERCOT Grid Operations

### Wind Integration Report : 04/25/2012

Peak Load	48,747 MW
Load Peak Hour (HE)	18
Wind Over Peak	2,744 MW
Wind Record 04/13/12	7,925 MW
Max Wind Value*	6,361 MW
Wind Peak Time	23:35
Wind Integration %	18.17 %

#### Hourly Average Actual Load vs. Actual Wind Output

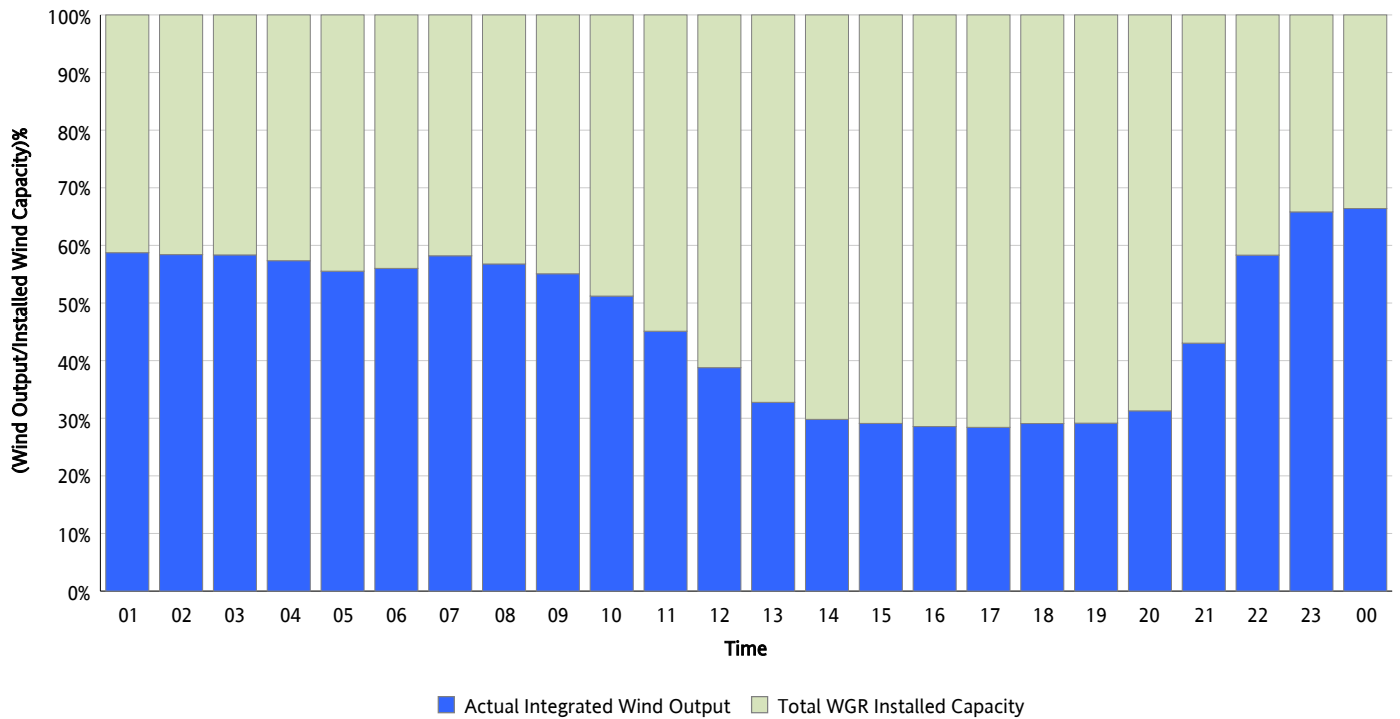
04/25/2012



\* Wind Record and Wind Max represent instantaneous values and the rest of the values are integrated over the hour

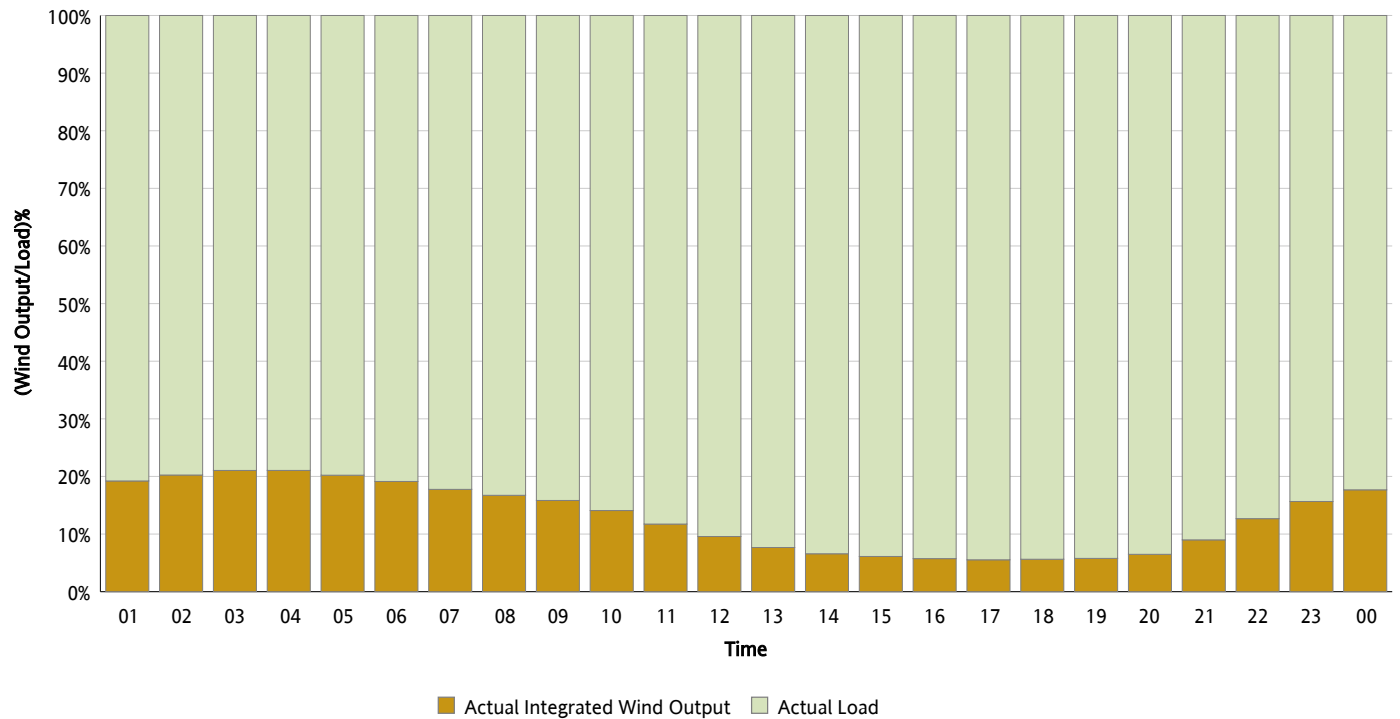
## Actual Wind Output as a Percentage of the Total Installed Wind Capacity

04/25/2012



## Actual Wind Output as a Percentage of the ERCOT Load

04/25/2012



## ERCOT Load vs. Actual Wind Output

04/18/2012 - 04/25/2012

